


Getting Started with Scan&Solve™ for Rhinoceros


Installation

Run **Scan&Solve_RhinoSetup.exe** to install the Scan&Solve plugin.

Operation

Scan&Solve functionality is available by typing **SnS** at Rhino's command prompt and selecting a **solid** on which to operate. The plugin also installs a toolbar with the following buttons:

 starts the Scan&Solve plugin, also accessible by typing **SnS**.

 opens this document, also accessible by typing **SnSDocs**.

 points the web browser to www.scan-and-solve.com, also accessible by typing **SnSWeb**.

Specify Tab Controls

The stress problem is set up by working left to right within the **Specify** tab. Choose material, restraints, loads, and problem resolution. Click the Gravity checkbox to enable or disable gravitational loading.

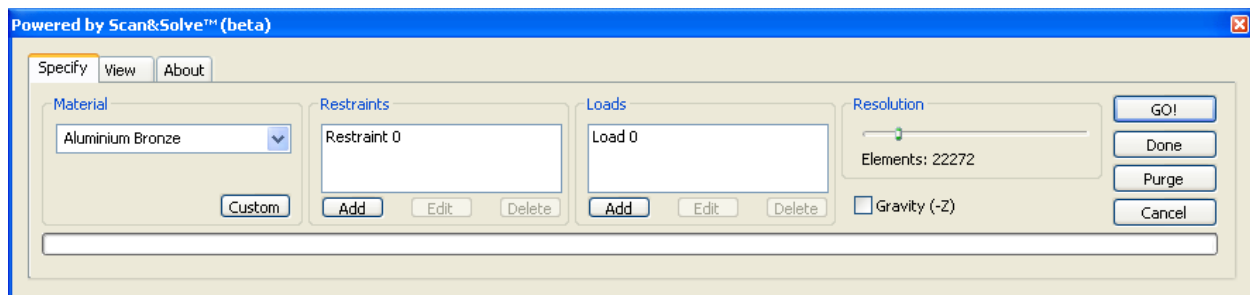
[**Custom**] opens the material property editor.

[**GO!**] solves the problem.

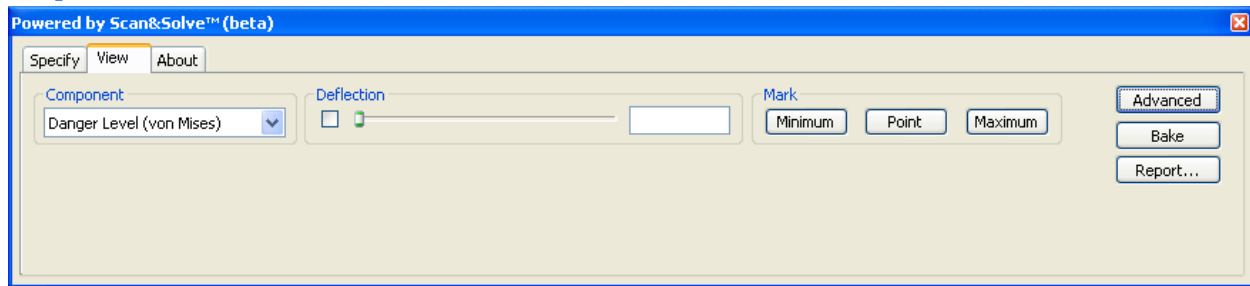
[**Done**] exits Scan&Solve after saving the current setup and the last computed solution.

[**Purge**] removes analysis results from the Rhino model, minimizing file size.

[**Cancel**] exits Scan&Solve without making changes.



Simplified View Tab Controls



Component combo box selects the active solution component.

Deflection slider controls the scale of the deflection for the solution geometry. The adjacent edit box shows the current deflection scale and supports manual entry of a deflection scale.

[Minimum] marks the location of the minimum value of the active solution component.

[Point] marks the value of the active solution component at a point selected on the model.

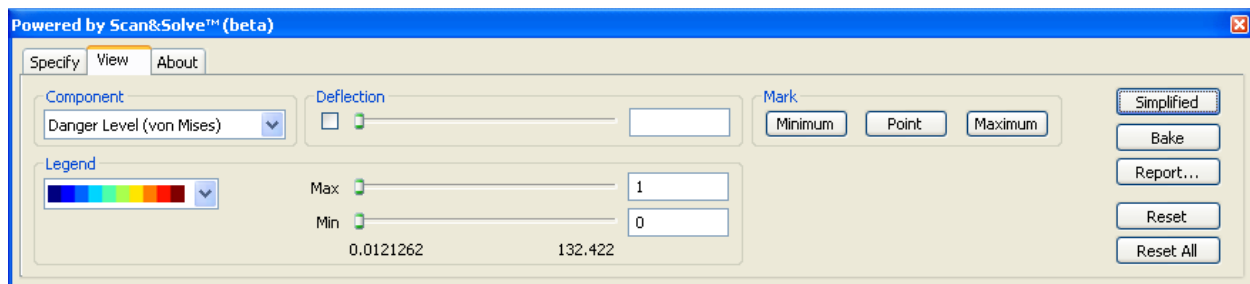
[Maximum] marks the location of the maximum value of the active solution component.

[Advanced] enables more solution viewing options.

[Bake] writes the deflected geometry to the Rhino document.

[Report...] generates a web-ready report of the solution.

Advanced View Tab Controls



Legend combo box selects the legend color scheme for the active component.

Max slider controls the maximum value displayed on the legend. The adjacent edit box shows the current maximum legend value and supports manual entry of the maximum value.

Min slider controls the minimum value displayed on the legend. The adjacent edit box shows the current minimum legend value and supports manual entry of the minimum value.

[Simplified] simplifies the solution viewing options.

[Reset] resets the settings for the active solution component.

[Reset All] resets the settings for all solution components.